

HUNTERS[®]

HERE TO GET *you* THERE



Gipsy Hill

SE19 1PD

£1,650 Per Calendar Month



Recently refurbished top floor 2 double bedroom period conversion.

This two double bedroom apartment sits on the top floor of an imposing Victorian terraced house.

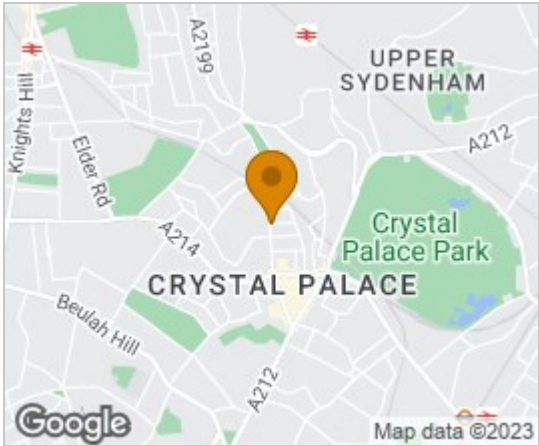
Situated in the heart of the famous Crystal Palace Triangle this well proportioned property benefits from two good sized double bedrooms, a spacious open plan reception, modern fitted kitchen with integrated appliances and contemporary bathroom with bath and separate shower cubicle.

To the rear of the house are communal gardens.

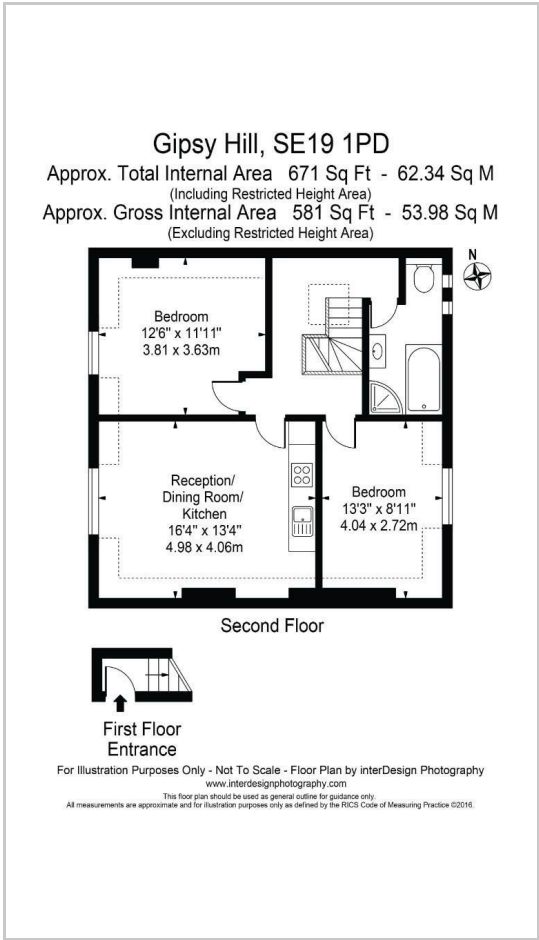
Crystal Palace 'Triangle' with its bars, restaurants and vibrant entertainment scene is a short walk away.



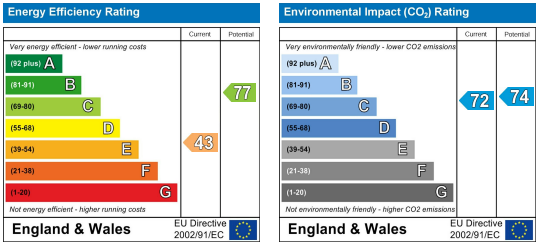
Area Map



Floor Plans



Energy Efficiency Graph



These particulars are intended to give a fair and reliable description of the property but no responsibility for any inaccuracy or error can be accepted and do not constitute an offer or contract. We have not tested any services or appliances (including central heating if fitted) referred to in these particulars and the purchasers are advised to satisfy themselves as to the working order and condition. If a property is unoccupied at any time there may be reconnection charges for any switched off/disconnected or drained services or appliances - All measurements are approximate.

THINKING OF SELLING? If you are thinking of selling your home or just curious to discover the value of your property, Hunters would be pleased to provide free, no obligation sales and marketing advice. Even if your home is outside the area covered by our local offices we can arrange a Market Appraisal through our national network of Hunters estate agents.